



MAPINFO® STRATUS™ DATA SHEET

MapInfo Stratus

PUBLISH CRITICAL BUSINESS DATA INSIDE OR OUTSIDE YOUR ORGANIZATION 24/7, THROUGH AN EASY TO DEPLOY, INTERACTIVE, USER FRIENDLY WEB-MAPPING SOLUTION

MapInfo Stratus is a web-based mapping application that provides current information about the location of assets, businesses and services. Its customizable, interactive portal places the richness of location intelligence at the fingertips of those who need it. MapInfo Stratus provides 24/7 access to location-based data and analysis via the cloud—ideal for disseminating public information, enabling business users to fulfill mapping requests, and sharing geo-based enterprise data with co-workers, citizens, constituents and customers. With Stratus, anyone can overlay current data from MapInfo Professional. Users can select views and deliver highly professional, business-branded custom maps online in interactive format.

Benefit

Stratus provides an efficient way to publish information-rich maps to your website for easy user access and interaction—with no GIS experience required. It harnesses the powerful analytic and visual capabilities of MapInfo Professional, enabling the use and layering of disparate data sets to create interactive maps.

- Stratus can tap into the data and presentation capabilities available through MapInfo Professional to offer extraordinarily robust analyses.
- The flexible, scalable design enables organizations to expand and customize applications as needs arise.
- Advanced data integration support provides linking to on-premise information.
- The user-friendly design makes it easy to upload data, add navigation, and publish maps for interactive online use.
- Rich Internet Applications (RIA) controls enable spatial content to be quickly and easily embedded into web sites and applications without the need for lengthy and costly software engineering or development.
- Our SaaS-based format effectively manages software updates, significantly lowering data hosting and network infrastructure, operational and resource costs.
- Data updates can be scheduled to ensure users are viewing current information.

EXPECTED ROI

MapInfo® Stratus™ makes it easy to reduce costs, improve efficiency and better meet the needs of customers, citizens and employees.

- Enable customized self-service by providing maps and schedules, specific locators, and more. Readily available when needed, online access reduces call-center traffic and adds customer convenience.
- Empower data users to view web-based maps on their own, expediting access to the insights needed for internal analysis and planning.
- Enjoy a faster, easier way to coordinate cross-organizational communications such as sales performance, campaign planning, and multi-channel promotional activities.

Step 1: Efficiencies

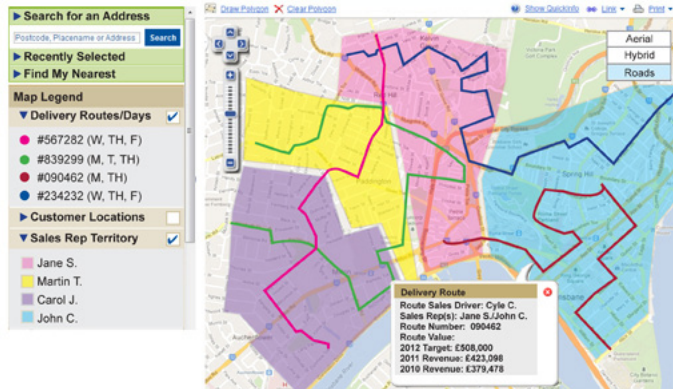
Stratus provides the power of geospatial information and expedites access to valuable location intelligence. Publishing to the web helps ensure that data is always up-to-date and readily available. Empowering citizens, customers and co-workers to access and customize maps online helps ensure they are better informed with relevant information. Pitney Bowes Software manages software updates, data hosting and the network infrastructure for this SaaS based application. And online access helps reduce call-center volume.

Step 2: Insights

As part of a full suite of Pitney Bowes Software location-intelligence solutions, Stratus can tap into the widest range of geodata. MapInfo Professional's robust map creation and publishing can be uploaded directly into Stratus for 24/7 online access to interactive and customizable maps. Pulling from and overlaying different data sets, Stratus can generate maps that are highly complex and yet remarkably intuitive. Base maps can be configured to show different views including aerial photography and street data.

Step 3: Flexibility

Stratus enables users to access maps where and when they want—and to create customized views that better inform their actions and decisions. Rich Internet Application (RIA) controls enable maps to be embedded and accessed from within an organizations' website or online portal. And Stratus is delivered as a Software as a Service (SaaS) solution via Pitney Bowes' proven cloud infrastructure, making it easier for organizations to scale and geo-enable required applications and departments.



MapInfo® Stratus™ blends the rich insights of Pitney Bowes Software Location Intelligence with modern web-based technologies to cost-effectively produce high-quality, interactive maps with customized queries.

MAPINFO® STRATUS™ DATA SHEET

PRODUCT ADVANTAGES

- Latest SaaS technology and standards
- Enhanced security and user management
- Assign permission for key functionality
- “Public Users” can browse anytime
- “Secured Users” must login
- Rich Internet Applications (RIA) controls
- Maps and spatial capabilities can be embedded using JavaScript
- Increased map and legend controls
- Improved search functionality
- Improved Map Uploader
- Tracks progress of uploads
- Option to upload data or maps

Specifications

MapInfo Stratus supports all major web browsers including Internet Explorer 8, Internet Explorer 9, Chrome 16, Firefox 9 and Safari 5. MapInfo Stratus does not require plug-ins of any kind.

MapInfo Stratus supports web standards including XHTML 1.0, CSS2.0 and WCAG1.0.

For more information call 800.327.8627 or visit us online: www.pb.com/software

UNITED STATES

800.327.8627
pbsoftware.sales@pb.com

CANADA

800.268.3282
pbsoftware.canada.sales@pb.com

EUROPE/UNITED KINGDOM

+44.800.840.0001
pbsoftware.emea@pb.com

ASIA PACIFIC/AUSTRALIA

+61.2.9437.6255
pbsoftware.australia@pb.com
pbsoftware.singapore@pb.com



Every connection is a new opportunity™



Pitney Bowes Software, Inc. is a wholly-owned subsidiary of Pitney Bowes Inc. Pitney Bowes, the Corporate logo, Stratus and MapInfo are registered trademarks of Pitney Bowes Inc. or a subsidiary. All other trademarks are the property of their respective owners.
© 2012 Pitney Bowes Software, Inc. All rights reserved.

93120 AMER 1203